

COBIA BAY RETAIL PLAZA

Just west of FRUITVILLE RD & HONORE RD
SARASOTA, FLORIDA 34232
32,314 sf CENTER FOR LEASE



- **EXCELLENT VISIBILITY AND ACCESS ON FRUITVILLE MAJOR RETAIL CORRIDOR**

TARGET

Publix

WINN-DIXIE

Chick-fil-A

Applebee's

- **62,000 CARS PER DAY**

Demographic Snapshot

	2007	2012
Population 5 mile	165,430	185,044
HH Income	\$55,230	\$63,598
Median Age	46	48

LEASING INFO

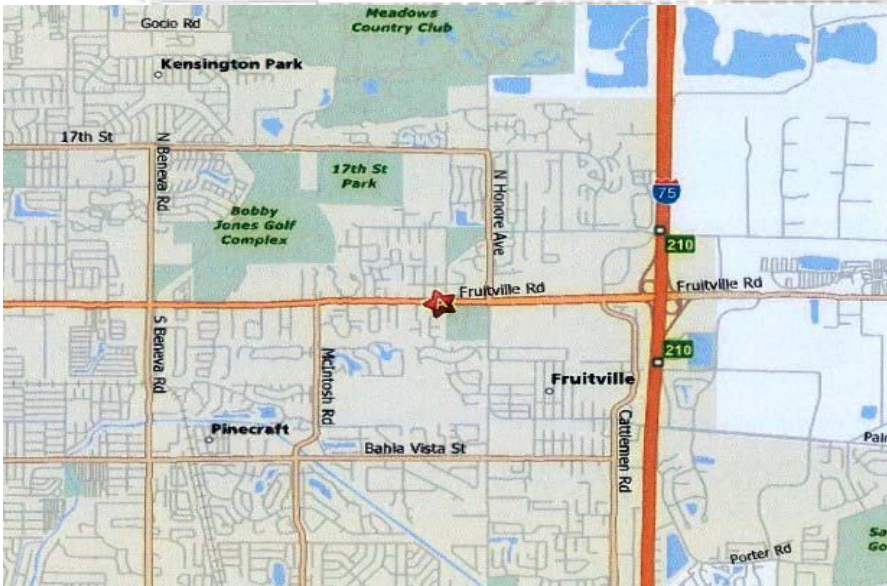
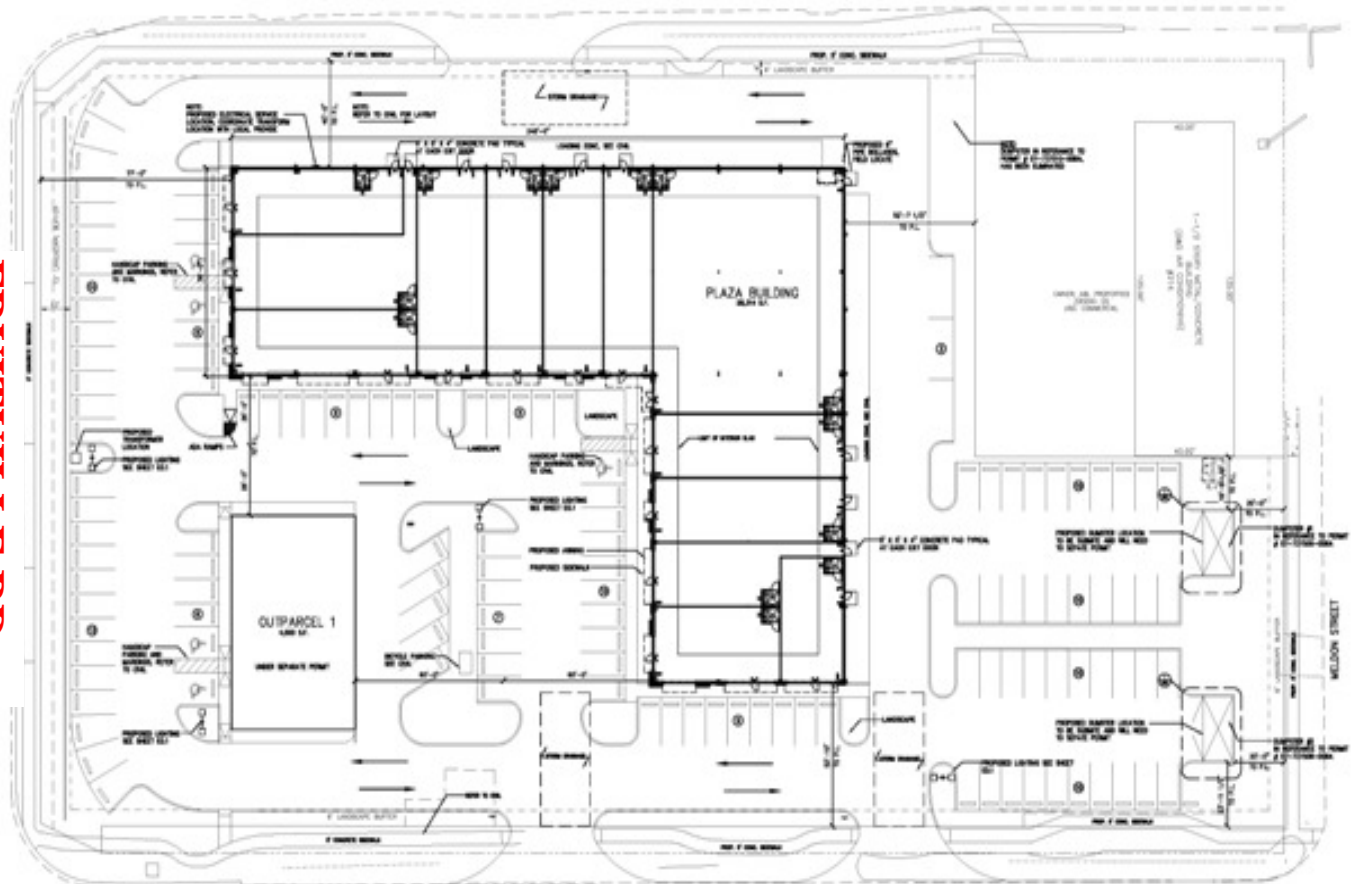
Tony Menendez

tony@haskelrealty.com

727-736-9200

Www.Haskelrealty.com

FRUITVILLE RD



LEASING & MANAGEMENT

727-736-9200

www.Haskelrealty.com